



# LOWER GREEN RIVER CORRIDOR FLOOD HAZARD MANAGEMENT PLAN

Draft Programmatic Environmental Impact Statement

Volume II

Appendix G: Outreach Summary





## Appendix G

### Outreach Summary

March 2023

# TABLE OF CONTENTS

<b>1.</b>	<b>INTRODUCTION .....</b>	<b>G-1</b>
<b>2.</b>	<b>SCOPING.....</b>	<b>G-5</b>
2.1	2018-2019 scoping period outreach.....	G-5
2.2	2021-2022 Scoping Period Outreach.....	G-7
<b>3.</b>	<b>ONGOING OUTREACH AND DRAFT PEIS ANNOUNCEMENTS.....</b>	<b>G-10</b>

## LIST OF FIGURES

Figure 1-1.	Lower Green River Corridor .....	G-2
Figure 1-2.	Green River Watershed.....	G-3

## ACRONYMS AND ABBREVIATIONS

cfs	cubic feet per second
District	King County Flood Control District
Ecology	Washington State Department of Ecology
EIS	environmental impact statement
ESJ	equity and social justice
FCD Motion	Flood Control District Motion
PEIS	programmatic environmental impact statement
Plan	Lower Green River Corridor Flood Hazard Management Plan
RM	river mile
SEPA	State Environmental Policy Act
SM	shoreline mile
WAC	Washington Administrative Code
WRIA	Watershed Resource Inventory Area

# 1. INTRODUCTION

The King County Flood Control District (District) is proposing a Lower Green River Corridor Flood Hazard Management Plan (Plan) for a reach of the Lower Green River and its associated floodplains that occur in portions of the cities of Auburn, Kent, Renton, SeaTac, and Tukwila, as well as unincorporated King County (Figure 1-1). The Lower Green River Corridor (corridor) covers approximately 21 river miles (RMs), the equivalent to 42 shoreline miles (SMs), from RM 11 to RM 32. The District is preparing a draft programmatic environmental impact statement (PEIS) that analyzes three alternative approaches to flood risk management in the corridor. The District is a county-wide special purpose district created to provide funding and policy oversight for flood risk reduction capital projects and programs in King County. The goal of the Plan is to provide a long-term approach to reduce flood risks, to address Tribal interests, and to improve fish habitat, while supporting the economic prosperity of the region. In 2014, the District Board of Supervisors (Board) set a provisional level of flood protection for the Lower Green River: a median flow of 18,800 cubic feet per second (cfs), plus 3 feet of freeboard, as measured at the Auburn gage, as the desired level of protection to meet this goal (King County Flood Control District Motion (FCD) 14-09).

The Green River is within the Washington State Department of Ecology's (Ecology's) Water Resource Inventory Area (WRIA) 9. It is 65 miles long between its mouth and the Howard Hanson Dam (HHD) near Palmer in unincorporated King County. As shown in Figure 1-2, it originates from headwaters in the Cascade Mountains in southeastern King County (Upper Green River Subwatershed), flows westward through the Green River Gorge State Park to an alluvial valley in mid-basin (Middle Green River Subwatershed), then turns north near Auburn through a lowland valley (Lower Green River Subwatershed) to the mouth of the Duwamish (Duwamish Estuary Subwatershed). At its confluence with the Black River, the Green River becomes the Duwamish River and continues northward, emptying into Puget Sound's Elliott Bay.

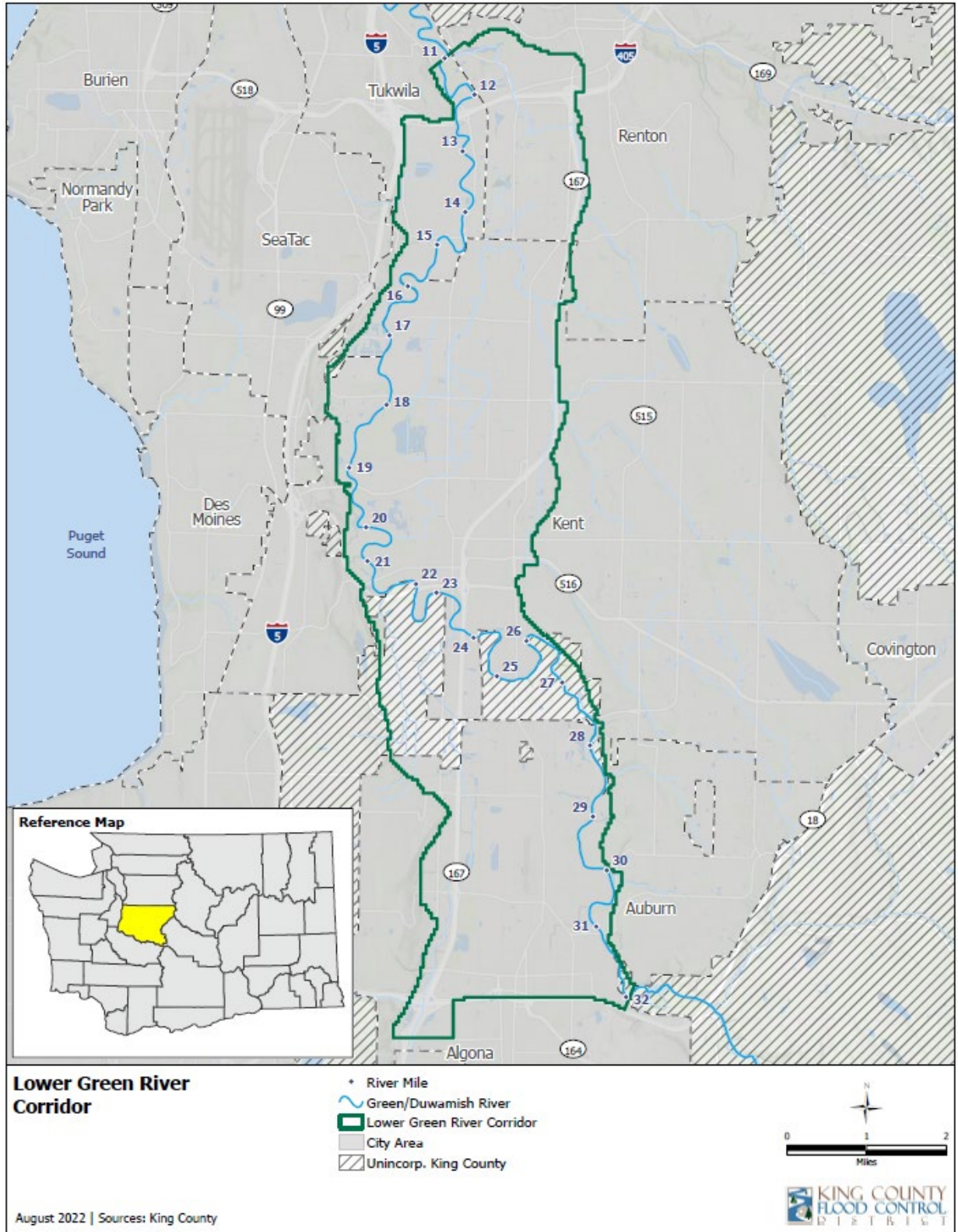


Figure 1-1. Lower Green River Corridor

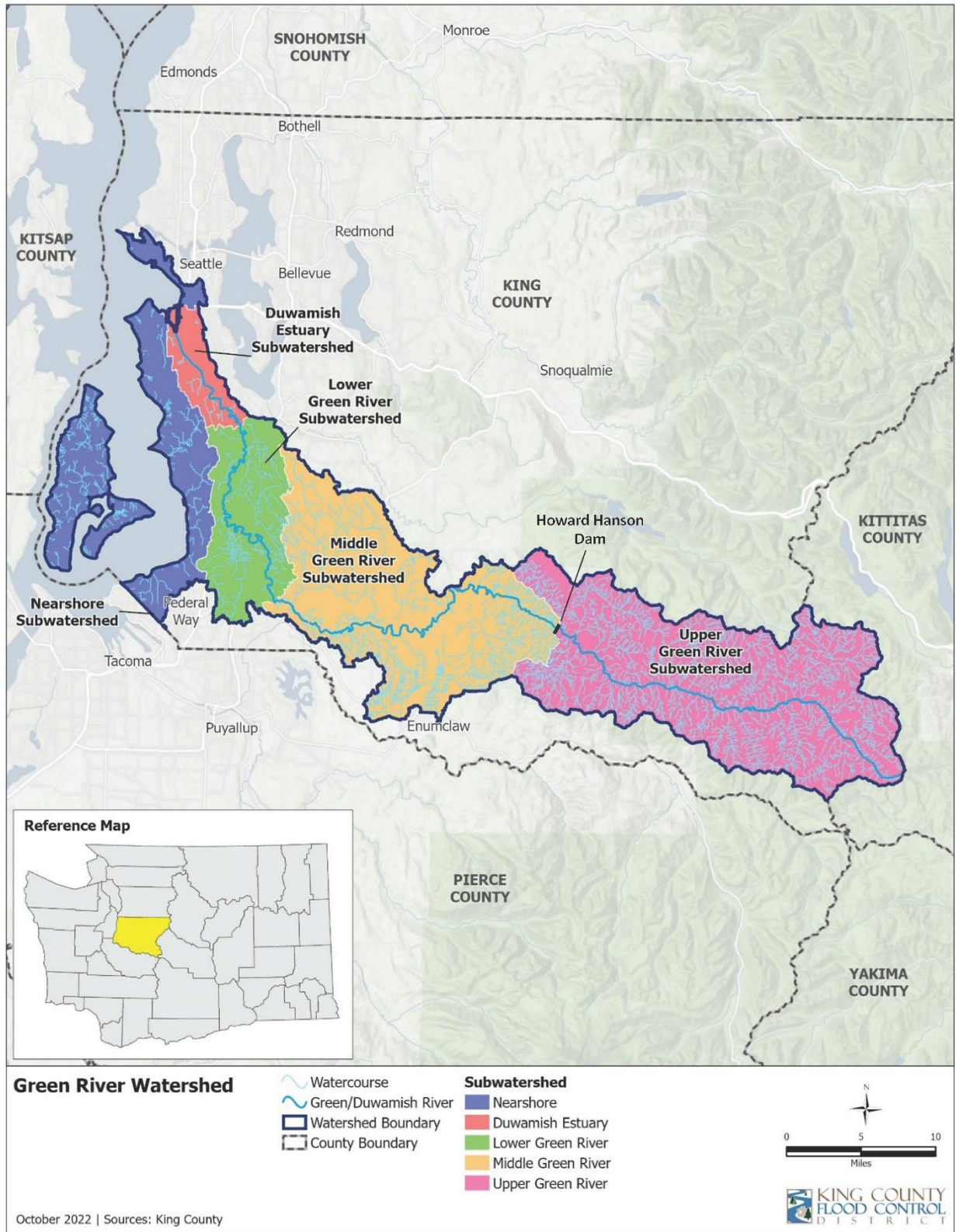


Figure 1-2. Green River Watershed

The information and analysis in the PEIS is based on the following technical appendices:

Appendix A: Alternatives Development describes the main policies and regulations that relate to flood hazard management on the Lower Green River. The appendix briefly explains the need for additional flood hazard management, the proposed alternatives, and how the alternatives were developed. The appendix describes structural and flood proofing approaches to flood management and includes preliminary, planning-level cost estimates.

Appendix B: Natural Environment describes the affected environment, methodologies, potential impacts, and mitigation for elements of the natural environment.

Appendix C: Built Environment describes the methodologies, affected environment, potential impacts, and mitigation for elements of the built environment.

Appendix D: Equity and Social Justice is based on information in appendices B and C and describes disadvantaged populations who experience inequities and how they could be impacted by flooding and flood hazard management.

Appendix E: Tribal Matters describes Tribal treaty rights and interests on the Lower Green River Corridor. The appendix is based on information in appendices B, C, D, and F and describes how Tribal treaty rights and interests intersect with existing conditions on the Green River and the potential impacts of flood hazard management.

Appendix F: Cumulative Impacts describes reasonably foreseeable and potential changes to the environment relevant to the Lower Green River Corridor. These changes are combined with past changes and potential impacts described in appendices B and C to evaluate the potential combined impacts over the 30- to 50-year planning horizon.

Appendix G: Outreach Summary contains outreach efforts during the scoping periods for the PEIS, as well as ongoing outreach and efforts to announce the availability of the draft PEIS.



## 2. SCOPING

Scoping is a required step in the preparation of a PEIS under SEPA. During scoping, Tribes, jurisdictions, agencies, intergovernmental entities, and members of the public are encouraged to provide comments on the proposal and scope of the PEIS, including commenting on alternatives, mitigation measures, and probable significant adverse impacts.

### 2.1 2018-2019 scoping period outreach

The District held a scoping period from November 2018 through April 2019. The scoping period was initially from November 28, 2018 to January 29, 2019. The District extended the deadline to April 1, 2019 and then again to May 1, 2019 to expand opportunities for public input. During the 2018 – 2019 scoping period, the District received hundreds of comments, many of which recommended a stronger emphasis on multiple benefits, including more robust salmon habitat protection and enhancement. The 2018 – 2019 Scoping Summary Report is available at [www.lowergreensepa.org](http://www.lowergreensepa.org). Outreach efforts are summarized below.

The District developed and executed a comprehensive plan to reach affected communities in the Lower Green River corridor. Because no one outreach method works for all these constituencies, the District relied on a variety of methods to inform and gain input throughout the process.

#### Outreach Tools

- Website: [lowergreensepa.org](http://lowergreensepa.org)
- Scoping notices
- Postcard mailer
- Paid advertisements
- News media releases
- Materials
- Emails
- Telephone calls
- Scoping meeting
- Presentations
- Comment forms
- Public testimony
- Roundtable discussions

#### Planning Activities

- Developed a public involvement plan to guide outreach activities, including the identification of strategies to overcome outreach challenges and maximize public engagement
- Prepared a community profile of the study area (including demographics such as income, ethnicity, age, language, education, housing, etc.) to better understand affected and interested stakeholders
- Identified key contacts within the study area and developed databases with stakeholder information

## Materials

- Website: [lowergreensepa.org](http://lowergreensepa.org)
- Scoping and hearing notices
- Postcard mailer
- Fact sheet (translated into Spanish, with opportunity for additional translation by request)
- Meeting boards, maps, and handouts (three alternatives, Purpose and Need, PEIS process, how to comment)
- Comment form (online and hard copies)
- PowerPoint presentation and talking points (for public meetings and presentations)

## News Media Outreach

- Published print advertisements in the following weekly outlets: The Facts Northwest, La Raza Northwest, Northwest Asian Weekly, and Seattle Medium
- Distributed media release regarding scoping period and scoping meeting to relevant outlets (regional, local, and business)
- Promoted information and activities via existing social media channels (Facebook, Nextdoor, and Twitter, etc.)

## Public Meetings

- Held scoping meeting on January 9, 2019
- Format: open house and public testimony and comment with court reporter and translator available as well
- Publicized via media (releases/advertisements) and distribution through listservs
- Hosted roundtable discussions on April 16-18, 2019 in four of the jurisdictions (Tukwila, Renton, Kent, and Auburn) to gain input on priorities
- Provided presentations to community organizations as requested

## Direct Outreach

- Distributed a postcard mailer to all residents and business addresses in the study area (approximately 27,300 addresses)
- Disseminated scoping and other information via distribution list (approximately 255 contacts)
- Visited with individual businesses, agricultural interests, residential neighborhoods, mobile home parks, apartment complexes, community centers, senior centers, and educational institutions, etc.
- Emailed and called a broad base of diverse stakeholders, providing information and requesting that they help distribute information via social media, listservs, E-newsletters, websites, etc. and/or attend a roundtable discussion

## 2.2 2021-2022 Scoping Period Outreach

The District developed three revised alternatives, in part to better emphasize multiple benefits. To provide for input on the revised alternatives, the District had a second scoping period in 2021-2022. The scoping period began on December 1, 2021, and was originally scheduled to end on January 14, 2022. In response to requests for more time to comment, the District extended the scoping period to February 4, 2022. The 2021 – 2022 Scoping Summary Report is available at [www.lowergreensepa.org](http://www.lowergreensepa.org). Outreach efforts are summarized below.

As it did for the 2018 – 2019 scoping period the District developed and executed a comprehensive plan to reach affected communities in the Lower Green River Corridor. COVID-19 was taken into consideration in the outreach plan. Because no one outreach method works for all constituencies, the District relied on a variety of methods to inform and gain input throughout the process.

### Outreach Tools

- Website: [lowergreensepa.org](http://lowergreensepa.org)
- Scoping notices
- Postcard mailer
- Paid advertisements
- News media releases
- Materials
- Emails
- Telephone calls
- Scoping meeting
- Presentations
- Comment forms
- Public testimony
- Social media posts

### Planning Activities

Before the scoping comment period began, the District engaged community leaders representing primarily hard-to-reach populations to better understand existing levels of awareness regarding flooding; gain engagement recommendations and build relationships. Community leaders' input informed planning and database development.

- Conducted confidential interviews with community leaders for input and to inform future engagement
- Used the community profile of the study area prepared in 2018 (including demographics such as income, ethnicity, age, language, education, housing, etc.) to better understand affected and interested stakeholders
- Developed a public involvement plan and timeline to guide and maximize outreach activities
- Identified key contacts within the study area and developed project databases with stakeholder contacts and information

### Materials

Key materials to explain the PEIS process were developed and utilized throughout the scoping comment period. Materials varied in amount of detail and format.

Because significant portions of the population within the study area do not speak English as their primary language, the District translated key materials into eight languages (with the opportunity for

additional translations by request): Spanish, Chinese, Vietnamese, Korean, Russian, Ukrainian, Somali, and Tagalog.

- Website: [lowergreensepa.org](http://lowergreensepa.org)
- Scoping and meeting notices
- Postcard mailer
- Fact sheet (translated into eight languages with the opportunity for additional translations by request)
- Comment form (online and hard copies)
- Alternatives fact sheet and table
- Inundation map
- PowerPoint presentations and talking points (overview and alternatives, translated into eight languages with the opportunity for additional translations by request)
- Videos (overview and alternatives)

## News Media Outreach

The District identified relevant media outlets and utilized earned, paid and social media to broaden information distribution and reach a wider range of stakeholders.

- Published print and online advertisements in the following outlets: NW Asian Weekly, Seattle Chinese Post, La Raza del Noroeste, El Mundo, The Reporter (Kent, Renton, Auburn), Seattle Medium, The Facts
- Published SEPA notice in the Seattle Times, Puget Sound Business Journal, Daily Journal of Commerce
- Distributed news media releases at project milestones (scoping launch, extension, and close; public meetings)
- Shared Social Media Toolkit (newsletter, website, social media posts to share) with key stakeholders and promoted information and activities via existing social media channels

## Public Meetings

Public meetings were conducted to provide another opportunity for people to learn about the PEIS and scoping, to engage directly with the project team, and to provide formal comments during the scoping period. Meetings were virtual in response to continued COVID-19 prevalence.

- Held two virtual public meetings on January 6, 2022 (2:30-4:00 pm and 6:00-7:30 pm)
- Promoted meetings via news release, social media, project emails from District Executive Director and Chair, message on project website, direct calls/emails with contacts
- Meeting format: two presentations (overview and alternatives) followed by Q&A and formal public comment with court reporter at meeting and translators available upon request
- Meeting recordings and transcripts posted to project website (translations available upon request)
- Project presentations available upon request

## Direct Outreach

Direct outreach was conducted to inform and gain input, including efforts to ensure marginalized communities were informed and had opportunities to comment during the scoping period. Additionally, these efforts helped build relationships that can be useful as the project moves into the Draft PEIS comment period.

- Conducted one-on-one engagement and information sharing with area Tribes
- Mailed a postcard to all resident and business addresses in the study area (approximately 32,600 addresses)
- Distributed project and scoping information via distribution list (approximately 1,100 contacts)
- Emailed and called a broad base of diverse stakeholders, providing information; encouraging attendance at public meetings and offering presentations; and requesting they help distribute information via social media, listservs, e-newsletters, websites, etc.

### 3. ONGOING OUTREACH AND DRAFT PEIS ANNOUNCEMENTS

The District continued planning and engagement activities as it prepared for issuance of the draft PEIS. Efforts built upon the community engagement completed before and during the previous scoping periods.

#### Outreach Tools and Materials

The project website was updated at the close of the 2021-2022 Scoping Period to reflect the current project status and to include the Scoping Summary Report.

Outreach materials are being prepared for the release of the draft PEIS and the accompanying comment period. Outreach materials related to the announcement of the release include:

- Postcard mailer
- Emails
- News media releases
- Paid advertisements

Additional materials to be developed and utilized during the comment period include:

- Website: [lowergreensepa.org](http://lowergreensepa.org)
- Fact sheet(s)
- Presentation(s)
- Video(s)
- Social media toolkit

Key project materials will be translated into eight (8) languages with the opportunity for additional translations by request.

#### Planning Activities

- The District developed a workplan of activities to guide efforts during the development of the draft PEIS and issuance of the draft PEIS.
- The District is engaging Community Navigators to support outreach prior to and during the draft PEIS comment period. During this phase, the Navigators were briefed on the project and began developing engagement plans and tactics for their specific communities.

#### Direct Outreach

Engagement was conducted during development of the draft PEIS to gain input and inform the Equity and Social Justice (ESJ) methodology. The District reached out to and met with knowledgeable individuals from local jurisdictions, agencies, and organizations within the Lower Green River Corridor. Individuals were asked about community assets and potential benefits or impacts to those who may be more vulnerable to hazards such as flooding. The qualitative data collected informed the ESJ analysis for the draft PEIS.